

[www.vincent.it](http://www.vincent.it)

# YOUR PARTNER IN GLASS INDUSTRY

Tools & Solutions

# GLASS

**Vincent**<sup>®</sup>  
TOOLS FOR QUARTZ INDUSTRIES

 SURFACES GROUP



# YES WE CARE

## CREATING VALUE IN HARMONY WITH NATURE.

**Sustainability and leading-edge solutions make up the mindset of Surfaces Group** which implements an industrial policy based on sustainability.

Important projects already successfully carried through:

- **ADI Free Dry Grinding Wheels** for dry squaring. They enable both the reuse of powders generated by processing for the production of new mixes and easier waste disposal.
- **ECOS by International Chips**, a revolutionary technology for dry vibratory mass surface finishing, for any type of material. It simplifies the processing cycle and improves efficiency, enabling water saving and sludge reduction.
- The **Luna Abrasivi IQ** Line comprises new-generation grinding wheels for agglomerate surfaces, manufactured using an energy-saving production process.
- **VOC Free certification for the NoCoat Gloss and Supergloss** treatments, certifying the absence of formaldehyde, benzene and other volatile organic compounds harmful for the environment and people.
- **VINCENT HALO wheels: CO2 reduction**  
Due to their recyclable core, their light weight and volume, HALO single use wheels contribute to the reduction of CO2 emissions caused by transportation.
- **An in-house "Good Practices"** protocol for recycling and resource saving during daily life within the organisation.  
A great deal more can and must be done, but Surfaces Group has started out on the demanding but essential path to transformational change, and the promotion of eco-sustainable economic growth.

# GROUP IDENTITY



Italian technology  
innovation  
know-how  
research  
experience  
worldwide presence  
custom solutions

## Surfaces Group Absolute finishing

Surfaces Group is Italian leader worldwide in the production of integrated solutions in finishing processes for ceramics, glass, stone, engineered stone, keeping ahead of future trends and offering complete solutions, thanks to the synergy of brands of excellence representing the best of Italian output: Surfaces Technological Abrasives, ADI, NoCoat, International Chips, Luna Abrasiv, RBM, Vincent.

**Made in Italy** | Technological know-how, high quality raw materials and innovation to our customers service.

**International Presence** | We operate directly enabling us to be an authentic partner.

**Technology and Innovation** | The research of new solutions, anticipating the needs of a continuous evolving market.

**Tailor-Made solutions** | Excellent finishes for any type of material, tailor-made thanks to constant research.

Direct subsidiaries

10

Key sectors

5

Production sites

12

Employees

800

Countries served

70

more brands one group







## Who we are

VINCENT has been a leading manufacturer of diamond tools since 1974: tools that are used for cutting and grinding, as well as polishing natural stone, quartz agglomerate, glass and ceramic tiles. Our organization, which includes production sites in Italy and Asia, currently counts over 300 highly qualified employees and a sales force present in over 70 countries, serving more than 1400 customers around the world.

## OUR MISSION: TO ALWAYS BE AT YOUR SIDE

Our customers value us for the quality and consistency in the performance of our tools. This recognition is thanks to our quest over the past 50 years to find advanced technical solutions to develop innovative and performance geared products. More than just a supplier, we like to distinguish ourselves as partners, an active part of our clients' production process. We work together with our customers to apply and help define the tool most suited to their needs. The goal is to get the best possible solution to manage the customer's entire production process.



SURFACES GROUP

# History marked by innovation



Discover the evolution

1974

VINCENT was founded in Thiene, a small town in the Northeast of Italy, in 1974. The company is specialized in the production of diamond tools for cutting, grinding and polishing stone, natural stone, quartz agglomerate, glass and ceramic tiles.

1994

Twenty years after its foundation, in 1994, VINCENT caught the attention of the Austrian Swarovski family, who acquired the company and brought it into the TYROLIT group, manufacturers of abrasives. TYROLIT thus enforced its presence in the world of natural stone, and made its debut in ceramics and glass tools. Over the years, there have been many innovations, covering all applications for the processing of natural stone: starting from wire used in the quarry, to tools for polishing everything from kitchen tops to adjoining sectors, such as agglomerated stone, ceramic, glass, and automotive and optical glass.

2021

In 2021, the Quartz Industries division left the TYROLIT group to become part of Surfaces group, reviving the historical "VINCENT" brand, enhanced by the tagline "Tools for Quartz industries". With an emphasis on quartz, the most widespread mineral on Earth, it is contained in each of the materials worked by Vincent tools: natural stone, agglomerate, glass and ceramic.







GLASS

Intro	pag. 05
Competence & experience	pag. 08
Milestones for glass industry	pag. 09
Automotive & Technical Glass	pag. 11
+ High Speed Grinding Wheel	pag. 12
+ HALO	pag. 13
+ SAVA-Active dressing sticks for automotive glass grinding wheels	pag. 14
+ Diamond drills for automotive industry	pag. 14
+ XTREME SCM BELTS	pag. 15
+ HANDPADS	pag. 16
+ HYLAS	pag. 17
Flat Glass	pag. 19
+ STARFLEX	pag. 20
+ CERIUM polishing cup wheel	pag. 21
CNC Tooling	pag. 23
+ CNC wheels	pag. 24
+ CNC arris wheels	pag. 24
+ REVERSE	pag. 25
+ Milling cutters and Combined routers	pag. 26
+ Core drills	pag. 26
+ REX, SURFACE and ARRIS polishing wheels	pag. 27
Cutting & De-coating	pag. 29
+ ELASTIC wheels	pag. 30
+ Turbo saw blades	pag. 31
Optics	pag. 33
+ Curve generating and lapping tools, lens edging wheels	pag. 34



## Competence & experience Professional partner on equal terms

VINCENT has been a leading manufacturer of diamond tools since 1974: tools that are used for cutting and grinding, as well as polishing natural stone, quartz agglomerate, glass and ceramic tiles. Our organization, which includes production sites in Italy and Asia, currently counts over 300 highly qualified employees and a sales force present in over 70 countries, serving more than 1400 customers around the world.

### OUR MISSION: TO ALWAYS BE AT YOUR SIDE

Our customers value us for the quality and consistency in the performance of our tools.

This recognition is thanks to our quest over the past 50 years to find advanced technical solutions to develop innovative and performance geared products. More than just a supplier, we like to distinguish ourselves as partners, an active part of our clients' production process. We work together with our customers to apply and help define the tool most suited to their needs. The goal is to get the best possible solution to manage the customer's entire production process.

## Group A global partner for all applications in the glass industry





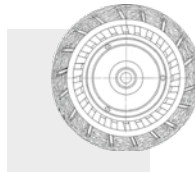
## Milestones for glass industry

Innovation leadership can only be achieved by constantly coming up with something new that serves the whole branch. VINCENT did just that in 1952 when it introduced glass fibre reinforcements and thus took on a pioneering role in grinding. In Glass Industry VINCENT plays an active role in developing innovation and the impressive milestones show it in the daily work of the customers all over the world.



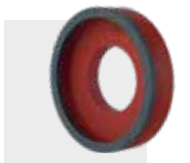
**1979**

VINCENT is leader supplier of polishing plateau for glass



**1992**

VINCENT develops breakwater system for straight bevelling machines



**2002**

VINCENT introduces long life resin cup wheels



**2010**

VINCENT creates new specifications for high speed automotive edge grinding



**2013**

VINCENT presents high speed peripheral wheels for solar glass



**2014**

VINCENT introduces the first single-use automotive wheel: HALO



**2017**

VINCENT creates a new peripheral wheel named HYLAS



**2018**

VINCENT presents STARFLEX the universal set of metal and resin cup wheels for flat edge processing of float and laminated glass.



**2019**

VINCENT introduces SAVA-ACTIVE abrasive sticks for dressing grinding wheels in the automotive glass industry

**PATENTED**



**2020**

VINCENT creates REVERSE - segmented and slotted wheels for laminated glass grinding

**PATENTED**



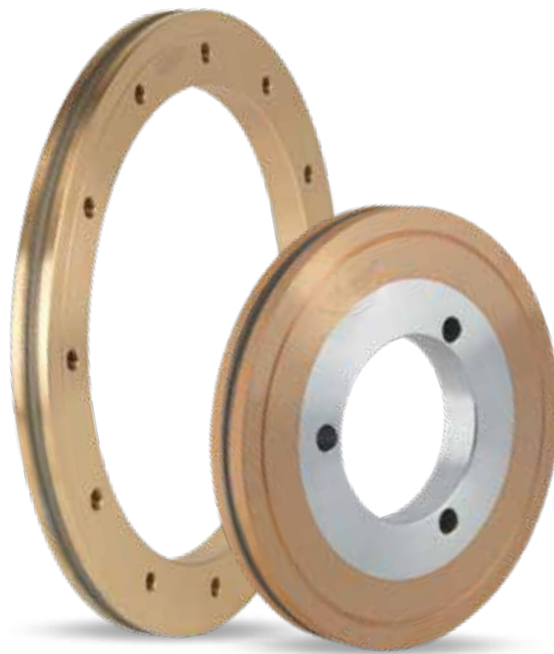
A close-up photograph of a car's side mirror and door panel. The mirror is on the left, reflecting a blurred background. The door panel is on the right, showing a textured surface. A blue rectangular overlay is positioned in the upper right corner, containing the text "AUTOMOTIVE & TECHNICAL GLASS".

AUTOMOTIVE &  
TECHNICAL GLASS



## HIGH SPEED GRINDING WHEEL

By using its extensive experience, VINCENT has become a worldwide trusted partner in the grinding of glass for automotive. Thanks to continuous technological developments and the wealth of process know-how, VINCENT is able to provide sustained solutions in line with the customers demanding, technical and economic expectations. The special bonds guarantee an excellent lifetime working at very high speed and allow to re-profile the wheels several times.



**+ High working speed:**

VINCENT grinding wheels excel in high-speed applications (up to 40m/minute in laminated applications & up to 30m / minute tempered) ensuring the highest standards of quality and lifetime in the market.

**+ Wide range of achievable profiles:**

tools are prepared by standard or customized profiles, designed to improve production cycles. The wide assortment includes special and asymmetric profiles for processing sunroofs, windshields, backlites, laminated sidelites and thin glass.

**+ Excellent lifetime:**

the grinding wheels, provided with high diamond thickness and specifications designed for different processes / applications / operating parameters, allow to obtain the best performance and ensure the repeatability for all subsequent use.

**+ Immediate start-up time:**

bonds properly well researched and perfect preparation of the diamond surface guarantee an excellent edge finish from the first piece, reaching the maximum processing speed just after a few pieces from start up.

**+ Light weight:**

the grinding wheel bodies are mostly made of bronze and aluminum. Bronze inhibits the rust formation on tool holder cones, and bodies produced in this way, lighten the weight of tools and make easier to work on electro-spindle bearings.

## HALO

With the HALO product line, VINCENT defines a new concept for edge grinding of automotive glass. As well as high process speed, low dressing frequency and a clean edge, the design of a single use wheel offers several new advantages and added value compared to a standard repeatedly reprofiled wheel.

### Application

Edge grinding of windshields, side windows, laminated side windows, backlites and sunroofs.



#### + Minimum startup time:

specific alloys grant a perfect edge finish from the first piece and maximum speed can be reached after few pieces.

#### + Increased productivity:

thanks to a reduced set up time and to the possibility to install more wheels on the same cone, HALO allows to work continuously. VINCENT also guarantees dimensional tolerances from the very first piece produced.

#### + Machine set up minimized:

because only new wheels with precise geometry are used, the machine setting and working parameters are always the same.

#### + Economic advantages:

minimized investment in new wheels; significant reduction of handling/logistic efforts and reduced spindle maintenance due to a lighter wheel that reduce vibrations during work.

#### + Easy installation:

in few seconds and proper positioning are granted by specifically designed cones and adaptors.

## PATENTED

### SAVA-ACTIVE DRESSING STICKS FOR AUTOMOTIVE GLASS GRINDING WHEELS

The innovative VINCENT abrasive stick has been designed to obtain improved quality and efficiency in the performances of diamond wheels in grinding glasses for Automotive glass industry.



- + Improvement of diamond tool life up to 40%:**  
Thanks to the grinding action of the colored part of sticks, diamond wheels maintain a more regular profile shape for a longer time. This action delays the gradual deformation of the profile edge.
- + Improved quality and finishing of the glass edge:**  
The regular use of the colored section of the stick avoids excessive exposure of the diamond present in the tools. This creates the optimal conditions for a correct removal of glass and an adequate working pressure, with consequent general improvement of the edge quality.
- + Increased productivity / reduction of scrap:**  
At the same working conditions, with the use of SAVA-active there is a 50% reduction in micro-splinter scrap (usually due to excessive exposure of the diamond during processing). Moreover, with SAVA-Active the overgrinding effect caused by progressive deformation of profile is avoided.

### DIAMOND DRILLS FOR AUTOMOTIVE INDUSTRY

VINCENT provides a wide range of monobloc drills and drills with mobile countersinks for the Automotive Glass Industry. They are specially designed and manufactured to guarantee the best quality of the hole at high feed rates.



- + Excellent startup:**  
from the first hole you get an excellent edge quality. To speed up the startup, VINCENT provides the drills with properly dressed diamond surface.
- + High feed speed:**  
the diamond drills have been designed for a consistent performance throughout their lifetime: the high edge quality is guaranteed up to 120 mm/min working.
- + Excellent edge finishing:**  
the diamond drills allow you to achieve excellent quality standards, ensuring a perfect finishing.
- + Long lifetime:**  
the sintered diamond drills are manufactured using specific bonds to grant an excellent lifetime, that satisfies the highest standards in the market.



## XTREME SCM BELTS

The new XTREME SCM BELT has been designed to improve finishing quality, increase lifetime and reduce the noise in PVB removal dry process for automotive glass industry.



### Application

PVB removal dry process  
for automotive glass industry

#### + High cutting capacity:

The new SCM BELT is produced using a special non-woven fiber impregnated with silicon carbide that grants a very high cutting capacity and that ensures a complete removal of exceeding PVB.

#### + Consistent quality:

The perfect distribution of silicon carbide together with the perfect elasticity of the base cloth gives XTREME SCM BELT a very high and consistent quality during all its lifetime.

#### + Noise reduction:

The innovative high quality materials used to produce XTREME SCM BELT make it less noisy than standard products on the market.

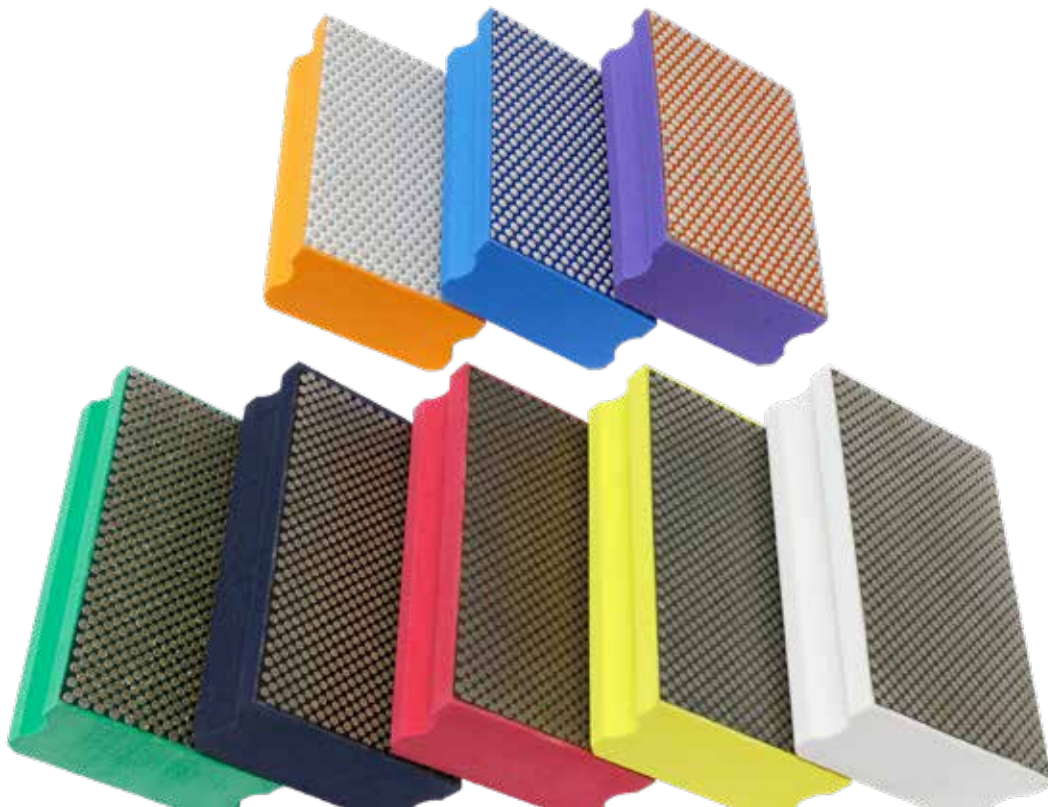
#### + Long life:

Thanks to the special cloth used, the new XTREME SCM BELT maintains the same tensioning for all its lifetime, this grants an homogeneous SCM consumption and make it possible to use the belt until the end of abrasive thickness.



## HANDPADS

VINCENT diamond handpads guarantee a very quick, economic and high-quality finish on flat and shaped surfaces either on GLASS, CERAMIC and STONE.



**+ High quality backing material:**

The backing material on VINCENT handpads has an optimized rigidity compared to the other products on the market. This reduces its deformation thus preventing from damaging the upper and lower surfaces of the slab when working the edge.

**+ Increased tool life:**

Thanks to the premium materials used and the attention to details, VINCENT handpads have a longer life than almost all similar products on the market.

**+ Easy to use on any application and material:**

VINCENT handpads can be used by anyone and can be easily used for multiple purposes on any material, from stone to glass to ceramics.

**+ Improved finish quality:**

Thanks to an innovative diamond pattern and optimized diamond fixing, VINCENT handpads guarantee an excellent surface finish.

## HYLAS

With HYLAS, VINCENT introduces a new line of wheels for grinding furniture and technical glass. The most significant benefits are: fast startup, high speed, excellent quality finishing as well as extreme flexibility of use.

HYLAS allows the same wheel to be installed on different double edging machines, regardless of the type of machine fitting, thanks to the simple use of suitable adaptors. HYLAS has also been designed to never need reprofiling and thus offers the advantage of working always with a new grinding wheel.



**+ Fast startup:**

specific bonds and accurate preparation of the diamond surface guarantee excellent edge quality already from the first piece.

**+ Maximum performance:**

the installation of only new grinding wheels with the maximum diameter grants always the best performance, ensuring perfect refrigeration, high speed, long life of the wheel and the excellent quality of the edge.

**+ Machine set up minimized:**

thanks to specially designed adaptors, the installation is easy and fast. Because only new wheels with precise geometry are used, tool positioning and machine setting remain always unchanged.

**+ Increased productivity:**

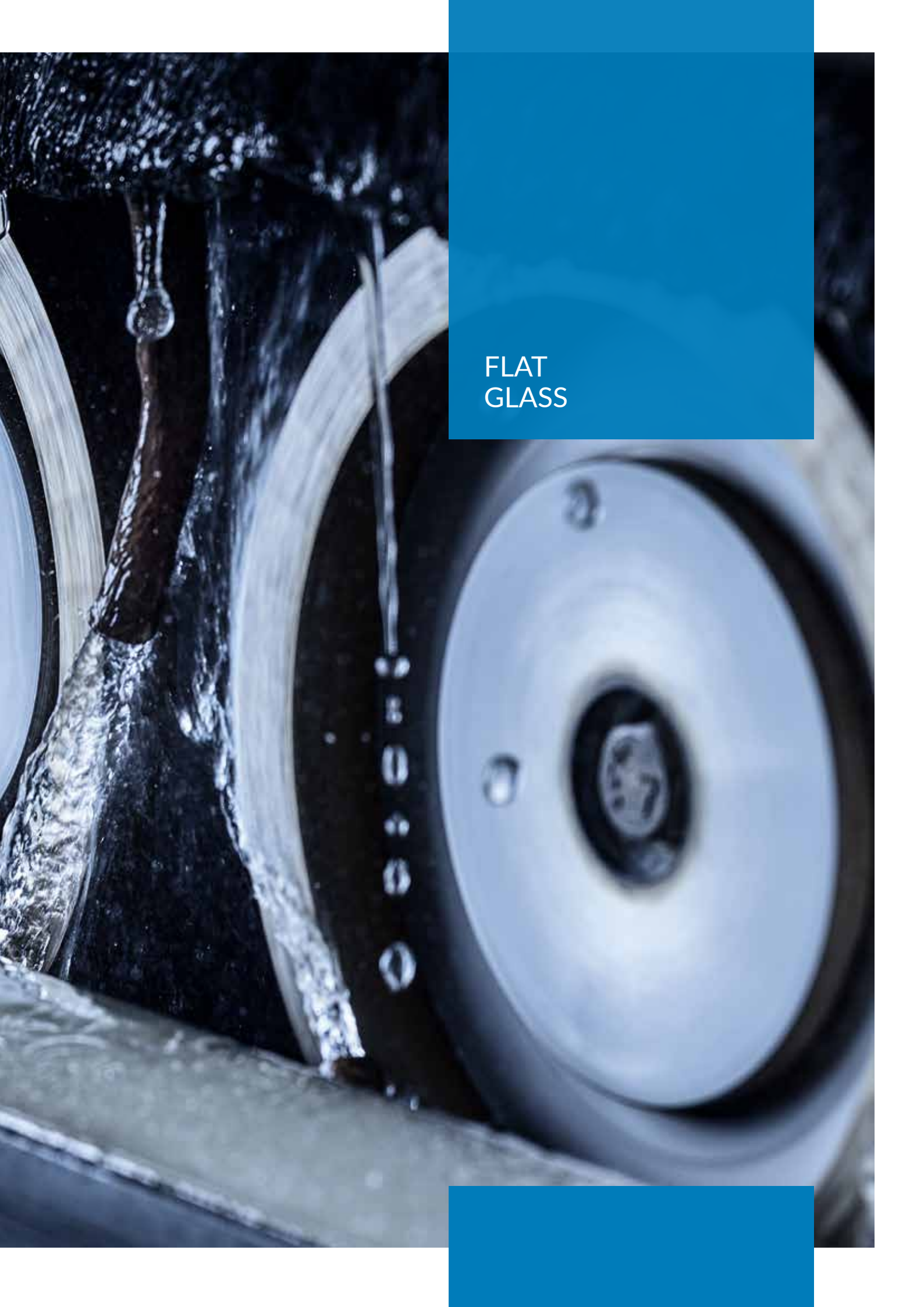
thanks to reduced installation time, fast start-up, high speed and durability, you get the highest productivity.

**+ Economic advantage:**

minimum investments in new wheels and cost saving in tool reprofiling, service and logistics.







FLAT  
GLASS



## STARFLEX

Universal set of metal and resin grinding cups for flat edge processing of float and laminated glass. Focused on process efficiency and flexibility, VINCENT provides STARFLEX. This is a set of flat edge grinding diamond wheels, specifically designed to ensure outstanding edge finishing and performance on all glasses, ranging from 3 mm mirror glass to thick glass, or even laminated glass, using always the same tools.



**+ High speed:**

the focus is the efficiency of whole machine. The specifically developed bonds and geometry and the perfect match of the metal and resin wheels allow excellent removal capacity at high speed.

**+ Flexibility:**

STARFLEX setup, composed by the slotted metal and resin grinding wheels, ensures optimal performance on all glasses. The sequence of two metal wheels followed by one resin wheel is the best technical solution for flat edge processing.

**+ Long lifetime:**

STARFLEX setup properly divides the removal rate between the different wheels to ensure the consistent consumption and the best efficiency of the tools.

**+ Optimized edge finishing:**

the combination of geometry and bond of STARFLEX allows the optimal flat edge finishing, preparing all glasses for final polishing.



**Application** Edge grinding of all glasses, ranging from 3 mm mirror glass to thick glass, or even laminated glass

## CERIUM POLISHING CUP WHEEL

Through the new line of CERIUM cups, VINCENT provides a great solution for the last steps in flat glass processing. With this product VINCENT offers to the market a tool that combines high performances and high quality with a proper cost benefit.



**+ Immediate startup:**

CERIUM tools grant an excellent finishing from the very first piece up to the whole tool life. This is possible due to the homogeneous adhesion to the glass edge achieved by the perfect balance and parallelism of the tool.

**+ High performance:**

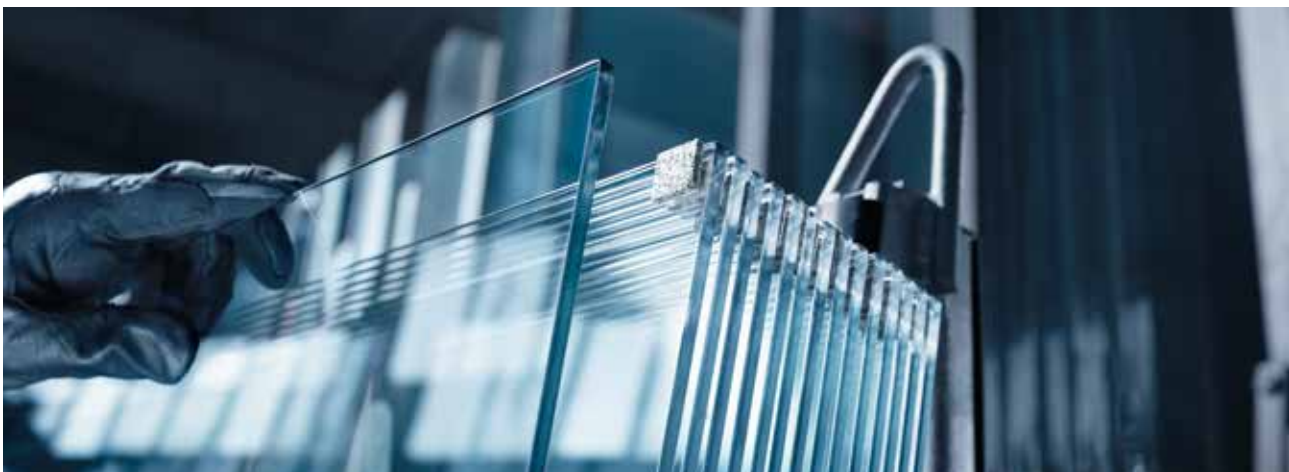
CERIUM cups can be used at very low pressure and high speed and still grant a perfect edge surface quality.

**+ High productivity:**

the high quality materials used to produce this tool, guarantee a lifetime above current market standards.

**+ Excellent finish:**

the new specification grants an excellent polishing quality that reduces roughness ( $R_a = 0.05$ ) of the edge to a very close level to the glass surface.



**Application** Float and laminated glass processed on straight line double edging machines







CNC  
TOOLING

## CNC WHEELS

Metal bond tools, with segmented and continuous rim for different applications and work sequences in horizontal and vertical CNC machines. The wheels are available in various diameters from 25 to 200mm for both float and laminated glass in all thicknesses.



- + **High stock removal rate:**  
thanks to the developed combination of grits and bonds, these tools are able to work in every working condition and always grant an high stock removal rate.
- + **High speed:**  
the tools are able to reach speed rate over standard on all glass thicknesses.
- + **Long lifetime:**  
thanks to the technical features of the products, the tools achieve a great benefit in terms of duration.

## CNC ARRIS WHEELS

Metal bond tools designed for double glazing processing on vertical CNC machines.



- + **Outstanding quality:**  
during all their lifetime, VINCENT Arris wheels grant an outstanding finishing quality that is extremely important for all the next processing phases.
- + **High speed:**  
VINCENT is the world leader in this application. These tools grant a processing speed above the market standards.
- + **Long lifetime:**  
although working at high speeds and always ensuring perfect quality standards, the tool guarantees an excellent lifetime.



## PATENTED

## REVERSE

REVERSE wheels have been designed to improve the productivity of machinery for processing of laminated glass for architectural and structural facades. Segmented and slotted REVERSE wheels are used to grind laminated glass in all the various construction and furniture applications.



**+ Improvement of diamond tool life up to 30%:**

By using REVERSE tools, the removal of plastic shards after grinding is easy and effective. This reduces frictions while grinding and prevents deformation and wear of diamond wheels.

**+ Enhanced edge finishing quality:**

Through a regular and effective removal of plastic shards, the diamond band is always free of process waste and can work with no overheat. This ensures enhanced finishing quality of the edge.

**+ Increased working speed:**

The new REVERSE wheels allow a 20% faster working speed compared to standard ones.

**+ Fragmentation of plastic waste:**

REVERSE tools ensure a fragmentation of plastic waste into small shards that can easily drain away from the grinding area. This avoids machine stops and re-setting during process. Moreover it solves the problem of scheduled cleaning cycles to remove plastic waste.

**+ Complete range of wheels geometries and thicknesses:**

VINCENT offers a wide range of REVERSE products that suit any production requirements and any different working conditions.



without REVERSE



with REVERSE



## MILLING CUTTERS AND COMBINED ROUTERS

VINCENT offers a wide range of milling cutters and combined tools. The combi tools are used for milling and edging all type of glass on CNC machines.



**+ Long lifetime:**

thanks to an excellent homogeneity in consumption during use and stability of the product, the best yields are guaranteed both with the milling cutter and with the combined - which is designed to align the wear of the router with the underlying profile

**+ Noiseless:**

these grinding tools produce significantly less noise compared to the other tools on the market.

**+ Immediate startup:**

VINCENT production pays extreme attention to the dressing of the tools, this leads to an immediate startup of VINCENT cutters and combined routers

**+ High productivity:**

high removal and excellent finishing are always granted. For this reason, by using VINCENT tools, the cycle times are always optimized compared to the standard.

## CORE DRILLS

VINCENT offers optimum solutions for the drilling of holes with perfect edges - even at high drilling speeds, right from the very first hole.

The company's long-standing experience and expertise in the development of diamond tools for drilling applications as well as the use of highly-developed manufacturing technologies ensure the best results.



**+ Excellent start up:**

from the first hole you get an excellent edge quality. To speed up the startup, VINCENT provides the drills with properly dressed diamond surface.

**+ High feed speed:**

the diamond drills have been designed for a consistent performance throughout their lifetime: the high edge quality is guaranteed up to 120 mm/min working.

**+ Excellent edge finishing:**

the diamond drills allow you to achieve excellent quality standards, ensuring a perfect finishing for both surfaces.

**+ Long lifetime:**

sintered diamond drills are manufactured using specific bonds to grant an excellent lifetime, that satisfies the highest standards in the market.

## REX, SURFACE AND ARRIS POLISHING WHEELS

Polishing cups for flat edge and bevels for straight line and double edging machines in the glass industry.

With these new products VINCENT completes its range of tools for glass processing on straight line and double edging machines.



### + Adaptability to the working surface:

The combination of specification and manufacturing care allows a perfect coupling to the glass surface and excellent working performance from the very first processed piece.

### + Excellent finishing:

The REX polisher-optimized for straight lines - and the SURFACE polisher - optimized for double edgers - are able to provide extraordinary finishing results in all working conditions. Furthermore, when used in combination with VINCENT Cerium wheels, they allow to achieve a super bright gloss.

### + High Productivity:

VINCENT polishing cups are made with geometries suitable for all types of processing (both on float and laminated glass), and guarantee excellent mechanical strength. The innovative shape of the slots eliminates smudging on thick laminated glasses and allows excellent working continuity on thin float glasses. This results in a considerable increase in productivity.

### + Wheels available for all machine models:

VINCENT polishing products, which range includes Arris polishing wheels (named ARRIS), are available with different attachments and sizes to fit all machines available on the market.







CUTTING &  
DE-COATING



## ELASTIC WHEELS

VINCENT provides the best solutions for removing all kinds of metal coatings from glass using portable grinders as well as vertical stationary and bridge machines.



- + **Complete removal of glass protection:** allowed by the built-in damping properties
- + **For wet and dry applications:** the special development of this wheel allows both wet and dry use.
- + **Centre reinforced:** the reinforced hole of the wheel allows a longer duration and grants to be used in all working conditions
- + **New formulation:** developed to remove any hard coating in combination with any scratch-resistant protective in just one pass (i.e. Easypro, SunGuard, others).



**Application**  
Grinding tools for low-e glass de-coating

## TURBO SAW BLADES

VINCENT diamond saw blades provide the ideal solution for cutting laminated glass. Available in 300, 350 and 400 mm diameters.



### Application

Diamond Saw Blades for cutting Safety Glass.

#### + Fast cutting and Long lifetime

due to the perfect combination of first quality diamond and new generation bond type, VINCENT Turbo saw blades reach outstanding performances.

#### + Clean cutting edges:

turbo segment design includes specific slots that allow an easy elimination of plastic and grant a cut homogeneous, clean and without defects.

#### + Noiseless cut:

thanks to special "sandwich" core, the blade cut perfectly straight and noiselessly, ensuring an homogeneous consumption of the segments during processing







OPTICS

## CURVE GENERATING AND LAPPING TOOLS, LENS EDGING WHEELS

Generating tools, diamond pellets and full face tools for the production of ophthalmic lenses. Diamond wheels for edging of ophthalmic lenses with manual, automatic and high-producti-  
on CNC machines.



**+ Curve generating:**

high-performance diamond crown wheels and peripheral wheels for curve generators. Despite the high processing speed, the surface quality is ideal for obtaining short fining times.

**+ Lapping tools:**

diamond pellets in various grit sizes for fining, re-grinding or backside clearing of lenses, moulds or glass for other specific applications. Full face tools for re-grinding, fining or chamfering

**+ Lens edging wheels:**

the ideal specification for each application on hand edgers, CNC edging machines or industrial edgers, which allow for best results regarding cutting speed, edge quality and luster of polish.



**Application**

Curve generating and lapping tools,  
lens edging wheels

# CATALOGUE

## General information

the tools shown in this catalogue, the information regarding delivery, appearance, performance and dimensions shall comply with the according status at the time of printing. We develop our products continuously. We reserve the right to change without prior notice. All errors and misprints reserved.

Reprinting as well as any kind of reproduction – even partially – is not permitted without the written permission of VINCENT SRL, 36016 Thiene/Italy.

A detailed version of our terms and conditions can be found at

[www.VINCENT.com](http://www.VINCENT.com)

Stampato su carta ecologica in quanto non viene utilizzato cloro per lo sbiancamento delle fibre durante la produzione della cellulosa ed è riciclabile al 100%

Printed on ecological paper as no chlorine is used for the bleaching of fibers during the production of cellulose and is 100% recyclable



[info@vincent.tools](mailto:info@vincent.tools) - [www.surfaces-group.it](http://www.surfaces-group.it)



SURFACES GROUP

VINCENT SRL a socio unico

Via dell'Elettronica, 6 | 36016 THIENE (VI) | Italy

Tel: +390445359911 Fax: +39 0445 370842

E-mail: [info@vincent.tools](mailto:info@vincent.tools) | Web: [www.vincent.it](http://www.vincent.it)